

Gaúcho (Corta-Jaca)

Chiquinha Gonzaga

Dm A7 Dm A7

5 Dm A7 Dm A7

9 Dm A7 Dm A7

13 D7 Gm A7 Dm

17 D7 Gm A7 Dm
Fine

21 Dm C7 F

26 Gm7 C7 F

30 C7 F

34 Dm 1. B \flat B dim A7/C \sharp

38 Gm7 C7 F C7 F A7

D.C. al Fine

Choro Workshop SICG 2026

I - Rhythmus

Maxixe:

Musical notation for the rhythm section of 'Maxixe'. The piece is in 2/4 time and B-flat major. The notation consists of three staves of music. The first staff contains measures 1-4 with chords Dm and A7. The second staff contains measures 5-8 with chords D7/F#, Gm, A7, and Dm. The third staff contains measures 9-12 with chords C7 and F6. The music features a consistent rhythmic pattern of eighth notes and rests.

II - Harmonie

1- Leitereigene Akkorde:

Musical notation for the harmonic section of 'Maxixe'. The notation consists of two staves of chords. The first staff shows measures 13-15 with chords F, F6, Gm, Gm7, Bb, and Bb6. The second staff shows measures 16-18 with chords C7, C7(9), Dm, Dm7, and Em7(b5). Below each chord is its corresponding Roman numeral: I, IIIm, IV, V7, VIIm, and VIIIm7(b5).

Notizen:

Musical notation for the notes section of 'Maxixe'. The notation consists of a single staff of music starting at measure 19, which is currently empty.

2- Zwischendominante:

20 D7 Gm G7 C7

(V7) ----- > IIm Doppeldominante - - - > V7

24 A7 Dm

(V7) ----- > VIIm

3-Typische Akkordfolgen:

28 Gm7 C7(9) F6 Em7(b5) A7 Dm

IIm7 - V7 - I IIm7(b5) - V7 - Im

"Quadrado de Fa":

Moll-Subdominante mit *sixte ajoutée*:

32 F D7 Gm C7 Bb Bbm6 F

I - VI7 - IIm - V7 IV - IVm6 - I

Notizen:

36

III - Kontrapunkt (*Baixaria*)

1- Regel für die Bassführung (Condução dos baixos):

A7 Dm A7 Dm A7 Dm A7 Dm

1 - 1 3 - 1 5 - 3 oder 1 7 - 3

2- Phrasen mit Arpeggien:

41 A7 Dm A7 Dm

7 - 3 7 - 3

45 A7 Dm A7 Dm

7 - 3 5 - 3 (oder 1)

3- Chromatische Annäherung:

49 D7 Gm A7 Dm

4- Längere Phrasen:

53 C7 F

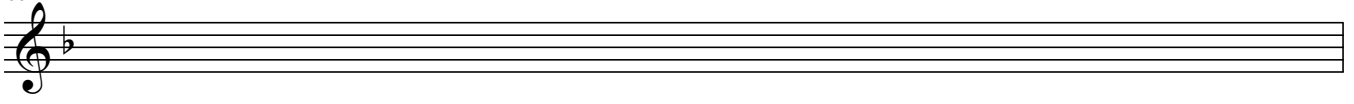
57 Gm7 C7 F

61 Gm7 C7 F

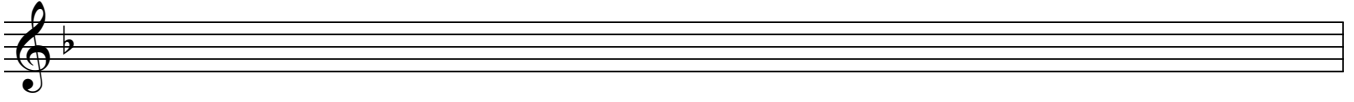
Notizen:

65

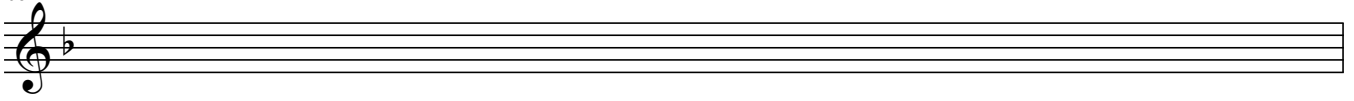
66



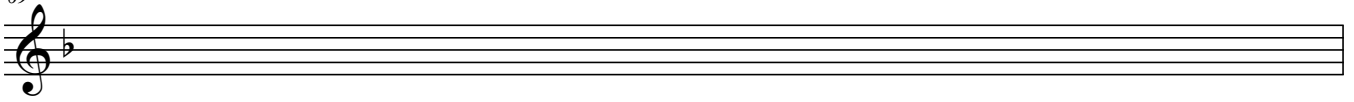
67



68



69



70



71

